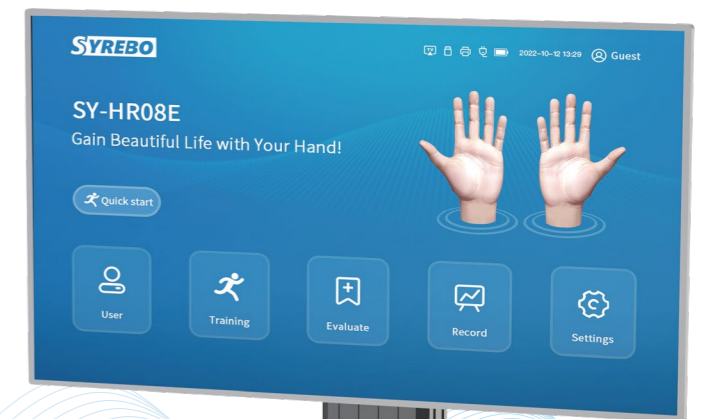




80⁺ Countries & regions 3000⁺ Medical units 50000⁺ Families

Providing innovative rehabilitation products & services
for hospitals/communities/families

Hand Rehabilitation Robot SY-HR08E



WhatsApp

Shanghai Siyi Intelligent Technology Co., Ltd.

Website: www.syrebo.com

E-mail: info@syrebo.com

Mobile&WhatsApp: (+86) 17317983724

Office: (+86) 400-6886-275

Address: 2F, Building 13, 2388 Xiupu Road, Pudong New Area, Shanghai





Syrebo® hand rehabilitation robot

is the innovative rehabilitation solution for your healthcare system!

- Soft Robotic Exoskeleton Technology
- Active & Passive Integration Training
- Cover All Stages of Hand Rehabilitation
- Intelligent User Management

Syrebo® Hand Rehabilitation Robot SY-HR08E

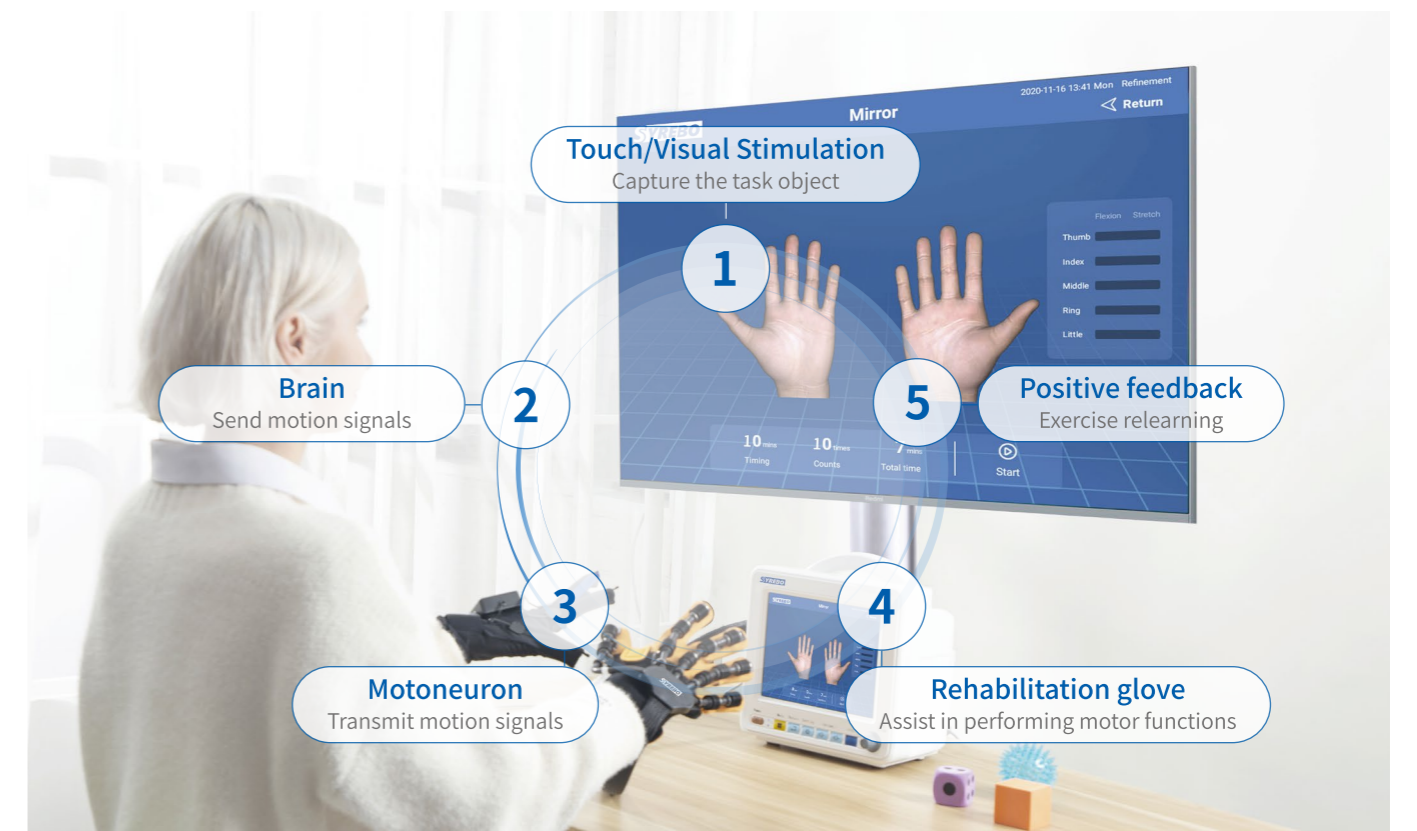
Syrebo® hand rehabilitation robot combines soft robotic exoskeleton technology and neuroscience, integrates active training and passive training, covers all stages of hand rehabilitation, helps patients to relearn and recover hand motor functions via series of passive and active exercises, to restore self-reliance ability.

Applicable people and departments

Patients with hand dysfunction caused by stroke, brain injury, hand trauma, cerebral palsy, orthopedic surgery, lymphedema after breast cancer treatment, etc.



Neurorehabilitation concept



Function Introduction

Passive Training

The power glove can drive the affected hand to execute repetitive stretching exercises, and the patient can simultaneously see the 3D model hand of this hand on the screen.

The glove can intelligently adjust the speed of flexion and extension.



Task-oriented Training

With the help of power glove and on-screen 3d animation, users can interact with real objects, which could re-educate patients to use hand during the Activities of Daily Living (ADLs).



Assistance Training

The high-precision sensor recognizes the weak active movements of the affected hand, then assists the patient to actively complete the hand activities and accelerates the recovery of hand function.



Bilateral Mirror Training

The healthy hand is used to drive the affected hand to achieve grasping action. And the simultaneous visual effects and proprioceptive feedback (feeling and seeing hand) are able to stimulate patient's neuroplasticity.



Resistance Training

Power glove will give the patient an opposite force and the patient needs to complete the flexion and extension exercises under resistance.



Active Game Training

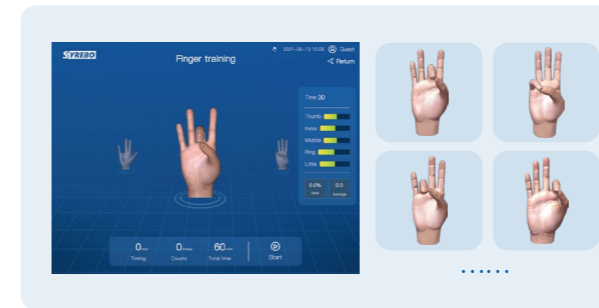
Multi interactive hand & brain combined games, enhance the immersion of hand rehabilitation, make training more interesting, improve patients willingness of active participation.



Unique Advantages

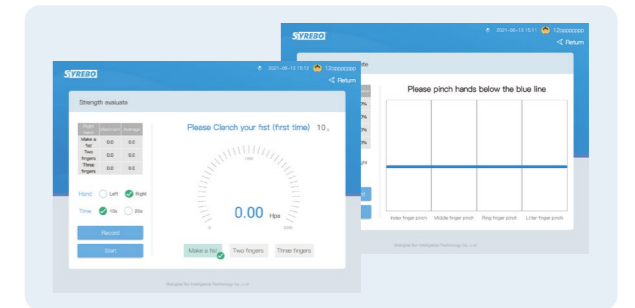
Fine Motor Training

Patients can perform the flexion and extension of single finger, finger end-to-end pinch training in multiple training scenarios, such as passive training, action-library bilateral mirror training, functional training and game training.



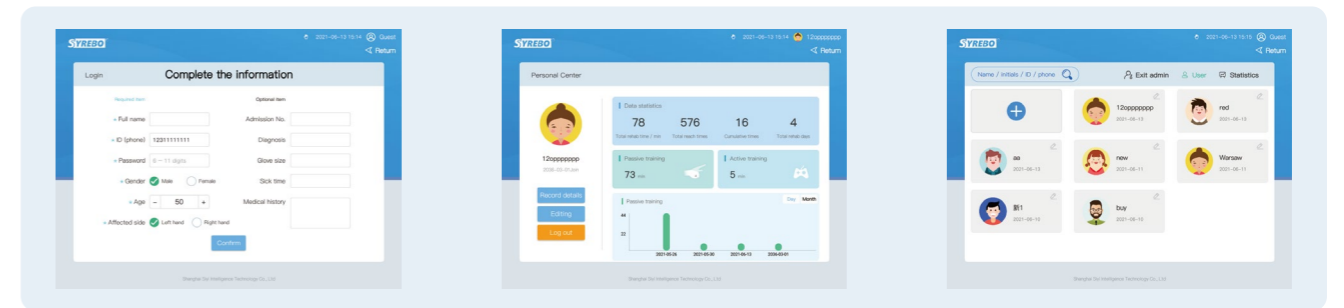
Strength & Coordination Evaluation

Patients can perform strength and coordination assessments. Data-based reports allow therapists to track patients progress.



Intelligent User Management

A large number of user files can be established to record user training data, which is convenient for therapists to customize personalized rehabilitation programs.



Targeted training for different muscle strength of patients' hand at different stages of recovery

Training Mode	Muscle strength of the hand		
	Gr.*0-1	Gr.*2	Gr.*≥3
Passive training	✓	—	—
Assistance training	—	✓	—
Active game training	—	—	✓
Resistance training	—	—	✓
Bilateral mirror training	✓	✓	✓

*Manual Muscle Testing Grades

Task-oriented training (TOT)	Function of the affected upper limb		
	Cannot lift up	Cannot lift up but can slide on the table	Can lift up
Passive training mode	✓ (Need arm support*)	✓ (Need arm support*)	✓
Bilateral mirror training mode	—	—	✓

*Recommended to use with Syrebo® arm support

Specification

Product name	Model	Size of host
Syrebo® Hand rehabilitation robot	SY-HR08E	300*160*275(mm)
Charge voltage	Charge frequency	
100-240V	50-60Hz	

Standard Accessories

Name	Qty	Name	Qty
Host	1pc	Data glove	1 pair
Power-assisted glove (S/M/L)(Refined mode)	3 pairs	Manual switch	1 pc
Power-assisted glove (M)(Group mode)	1pair	Adapter	1 pc
Dice	1 pc	User manual	1 pc
Wrist pillow	1 pc	Ball	1 pc
Qualified certification	1 pc		

Size option

Model	Hand length (in.)	Hand width (in.)
#5 (Child)	4.3~5.0	2.0~2.2
#7 (Child)	4.7~5.3	2.2~2.4
#9 (Child)	5.0~5.5	2.4~2.6
#12 (Child)	5.4~6.0	2.6~2.8
S	5.7~6.5	2.8~3.1
M	6.3~7.3	3.1~3.7
L	7.1~7.8	3.6~4.1
XL	7.7~8.3	3.9~4.6

